

OIC.11

ONCOLOGIC
IMAGING COURSE

2 0 2 2

ONCOLOGIC IMAGING:
ADDING VALUE
WHILE ADAPTING TO
CHANGING TIMES

JUNE 30 – JULY 02, 2022
DUBROVNIK/HR

www.esoi-society.org



WELCOME



Dear colleagues, dear friends!

It is our pleasure to welcome you to the 2022 annual Oncologic Imaging Course (OIC) in the jewel-like city of Dubrovnik. The OIC is the official joint annual meeting together with the European Society of Oncologic Imaging (ESOI) which has set itself the goal of bringing people together. Therefore, we are very glad that we will be able to meet you again in person this year.

The members of the programme planning committee, Prof. Gulia Zamboni, Prof. Clemens Cyran and Assoc.Prof. Marius Mayerhoefer, have created an excellent scientific and educational programme, dealing with various aspects and issues of cancer imaging. The programme includes teaching lectures, case presentations, panel discussions, as well as hands-on workshops. You will have the opportunity to gain knowledge on latest clinical and technical aspects of cancer imaging, to share experience, to discuss critical issues and open questions, and get support how to improve your day-to-day practice. And most importantly, you will have the opportunity to exchange ideas and make contacts within the community, colleagues and experts in different areas of cancer imaging. We hope that you will take this opportunity to establish new friendships and rekindle old ones. Enjoy the in person meeting in the beauties and charms of Dubrovnik and the Adriatic.

We are warmly welcoming you to OIC 2022!

Sincerely,

Heinz-Peter Schlemmer | ESOI President

on behalf of the OIC organisers Christian Herold · Hedvig Hricak · Maximilian F. Reiser



ORGANISERS & FACULTY

Organisers

C. Herold, Vienna/AT (OIC)

Medical University Vienna

H. Hricak, New York/US (OIC)

Memorial Sloan Kettering Cancer Center

M.F. Reiser, Munich/DE (OIC)

University Hospitals LMU-Munich

H-P. Schlemmer, Heidelberg/DE (ESOI)

German Cancer Research Center (DKFZ)



Memorial Sloan Kettering
Cancer Center.



Faculty

P. Baltzer, Vienna/AT

A. Becker, New York/US

B. Brkljacic, Zagreb/HR

G. Cappello, Candiolo/IT

C. Cyran, Munich/DE

M. D'Anastasi, Msida/MT

M. Eisenblätter, Freiburg/DE

M. Fabritius, Munich/DE

K.N. Feigin, New York/US

M. Fuchsjaeger, Graz/AT

M. Ginsberg, New York/US

T. Helbich, Vienna/AT

C. Herold, Vienna/AT

H. Hricak, New York/US

G. Ivanac, Zagreb/HR

M. Jochelson, New York/US

K. Keshari, New York/US

W. Kunz, Munich/DE

M. Mayerhoefer, New York/US

K. Pinker-Domenig, New York/US

H. Prosch, Vienna/AT

D. Regge, Torino/IT

M.F. Reiser, Munich/DE

J. Ricke, Munich/DE

J. Ruebenthaler, Munich/DE

H-P. Schlemmer, Heidelberg/DE

S. Schönberg, Mannheim/DE

M. Seidensticker, Munich/DE

A. Vargas, New York/US

A. Wibmer, Munich/DE

S. Woo, New York/US

WORKSHOPS

WEDNESDAY, JUNE 29

MEETING ROOM LAVANDULA 2

15:00 **WORKSHOP 1:
RECIST**

W. Kunz, Munich/DE

16:00 10-minute break

16:10 **WORKSHOP 3:
PROSTATE CANCER**

H-P. Schlemmer, Heidelberg/DE;
A. Wibmer, New York/US

17:10 10-minute break

17:20 **WORKSHOP 5:
RECTAL CANCER**

D. Regge, Torino/IT

WEDNESDAY, JUNE 29

MEETING ROOM LAVANDULA 3

15:00 **WORKSHOP 2:
BREAST IMAGING
CHALLENGING CASES 1**

P. Baltzer, Vienna/AT

16:00 10-minute break

16:10 **WORKSHOP 4:
BREAST IMAGING
CHALLENGING CASES 2**

G. Ivanac, Zagreb/HR

17:10 10-minute break

17:20 **WORKSHOP 6:
RESPONSE PATTERNS AND PITFALLS
ASSOCIATED WITH IMMUNE THERAPY**

H. Prosch, Vienna/AT

THURSDAY, JUNE 30

MEETING ROOM LAVANDULA 3

17:30 **WORKSHOP 7:
BREAST IMAGING
CHALLENGING CASES 3**

M. Jochelson, New York/US

THURSDAY, JUNE 30
MEETING ROOM LAVANDULA 1



08:00 **Welcome and introduction**

H. Hricak, New York/US; H-P. Schlemmer, Heidelberg/DE

Session 1

**PRINCIPLES OF ONCOLOGIC IMAGING
AND REPORTING**

M. D'Anastasi, Msida/MT; J. Ricke, Munich/DE

08:20 **User-friendly reporting**

M. Ginsberg, New York/US

08:40 **Structured reporting systems**

tba

09:00 **Common errors in oncologic imaging**

D. Regge, Torino/IT

09:20 **Therapy monitoring and new ideas**

K. Keshari, New York/US

09:40 20-minute coffee break

Session 2

IMAGING TUMOR RESPONSE TO THERAPY

H-P. Schlemmer, Heidelberg/DE; M. Seidensticker, Munich/DE

10:00 **Morphological Imaging Criteria
(RECIST and its modifications)**

M. D'Anastasi, Msida/MT

10:20 **Lymphoma: Response assessment**

M. Mayerhoefer, New York/US

10:40 **Therapy monitoring beyond metabolism**

C. Cyran, Munich/DE

11:00 **Imaging complications of oncologic treatments**

D. Regge, Torino/IT

11:20 **Should we routinely use response criteria in clinical practice?**

G. Cappello, Candiolo/IT

C. Cyran, Munich/DE

M. D'Anastasi, Msida/MT

M. Mayerhoefer, New York/US

11:50 **Case based discussion**

G. Cappello, Candiolo/IT

C. Cyran, Munich/DE

M. D'Anastasi, Msida/MT

M. Mayerhoefer, New York/US

12:30 60-minute lunch break

THURSDAY, JUNE 30

MEETING ROOM LAVANDULA 1

Session 3

THORACIC

C. Herold, Vienna/AT; H. Hricak, New York/US

13:30 Update on lung cancer screening

C. Herold, Vienna/AT

13:50 The solitary pulmonary nodule

H. Prosch, Vienna/AT

14:10 Complications and post-treatment findings
in thoracic tumors

M. Ginsberg, New York/US

14:30 Chest infections in oncologic patients

W. Kunz, Munich/DE

14:50 Case based discussion

M. Ginsberg, New York/US

C. Herold, Vienna/AT

W. Kunz, Munich/DE

H. Prosch, Vienna/AT

15:10 30-minute coffee break

Session 4

HOT TOPICS FOR THE FUTURE OF RADIOLOGY

C. Herold, Vienna/AT; M.F. Reiser, Munich/DE

15:40 Nurturing integrated diagnostics

H. Hricak, New York/US

Session 5

MUSCULOSKELETAL

M.F. Reiser, Munich/DE; J. Ruebenthaler, Munich/DE

16:10 Focal bone lesions and cancer mimics

M.F. Reiser, Munich/DE

16:30 Soft tissue sarcomas

W. Kunz, Munich/DE

16:50 Bone marrow malignancies

M. Mayerhoefer, New York/US

17:10 Case based discussion

W. Kunz, Munich/DE

M. Mayerhoefer, New York/US

M.F. Reiser, Munich/DE

**DON'T
MISS!**

SCIENTIFIC SESSION

H. Hricak, New York/US; H-P. Schlemmer, Heidelberg/DE

17:30 First proof of concept in-vivo experiences of photon counting computed tomography for improved detection of tumor associated osteolytic lesions in patients with multiple myeloma

M. Grözinger, Heidelberg/DE

17:37 Are mutation carrier patients different from non-carriers patients? Genetic, pathology and US features of patients with breast cancer

R. Pintican, Cluj-Napoca/RO

17:44 Pirads Version 2.1 – Practical application

D. Račeta Mašić, Montenegro/ME

17:51 Gadoteric acid enhanced MRI in the early postoperative period after liver transplantation: Is there a correlation between Gadoteric acid uptake and liver maximum function capacity (LiMAX) assessed with ¹³C-methacetin breath test?

A-K. Kaufmann-Bühler, Graz/AT

17:58 Early cancer detection in Li-Fraumeni syndrome with whole-body MRI: Evaluation of MRI sequences with regard to the need for contrast agent

M. Keymling, Heidelberg/DE

18:05 Giant angiomyolipoma as part of tuberous sclerosis syndrome

T. Tapuskovic, Podgorica/ME

18:12 Discussion

07:45 **ESOI General Assembly**

08:15 5-minute break

Session 6

GYN ONCOLOGY

H. Prosch, Vienna/AT; H-P. Schlemmer, Heidelberg/DE

08:20 **Imaging cancer of the cervix**
S. Woo, New York/US

08:40 **MRI for characterizing ovarian lesions**
A. Vargas, New York/US

09:00 **Hybrid imaging in gynaecological malignancies**
J. Ruebenthaler, Munich/DE

09:20 **Case based discussion**
J. Ruebenthaler, Munich/DE
A. Vargas, New York/US
S. Woo, New York/US

09:50 20-minute coffee break

Session 7

PROSTATE

C. Cyran, Munich/DE; D. Regge, Torino/IT

10:10 **Principles of MRI of the prostate**
H-P. Schlemmer, Heidelberg/DE

10:30 **Functional imaging of the prostate**
J. Ruebenthaler, Munich/DE

10:50 **Imaging the treated prostate**
A. Becker, New York/US

11:10 **Case based discussion**
J. Ruebenthaler, Munich/DE
H-P. Schlemmer, Heidelberg/DE

11:30 60-minute lunch break

Session 8

HEPATOBIILIARY/PANCREATIC

C. Cyran, Munich/DE; M. Mayerhoefer, New York/US

12:30 Ductal adenocarcinoma: Staging vs. restaging
M. Fabritius, Munich/DE

12:50 Cystic lesions of the pancreas
M. Eisenblätter, Freiburg/DE

13:10 Detection and characterisation of liver lesions,
why hepatobiliary MRI?
M. Seidensticker, Munich/DE

13:30 Interventional approach to liver lesions
J. Ricke, Munich/DE

13:50 Biliary tumors: An update
M. Seidensticker, Munich/DE

14:10 Case based discussion
M. Eisenblätter, Freiburg/DE
M. Fabritius, Munich/DE
J. Ricke, Munich/DE
M. Seidensticker, Munich/DE

14:40 20-minute coffee break

Session 9

GI ONCOLOGY

M. Mayerhoefer, New York/US;
H-P. Schlemmer, Heidelberg/DE

15:00 Esophageal cancer
G. Cappello, Candiolo/IT

15:20 Rectal cancer MRI: Pearls and pitfalls
D. Regge, Torino/IT

15:40 GIST: Diagnosis and treatment response assessment
D. Regge, Torino/IT

16:00 Integrated diagnostics in metastasized colon cancer
S. Schönberg, Mannheim/DE

16:20 Neuroendocrine tumors
C. Cyran, Munich/DE

16:40 Case based discussion
G. Cappello, Candiolo/IT
C. Cyran, Munich/DE
S. Schönberg, Mannheim/DE

Session 10

WOMEN'S IMAGING – BREAST

T. Helbich, Vienna/AT; K. Pinker-Domenig, New York/US

08:20 Contrast enhanced mammography:
Ready to replace contrast enhanced MRI?
T. Helbich, Vienna/AT

08:40 Morphologic breast ultrasound:
Who needs functional information
B. Brkljacic, Zagreb/HR

09:00 Breast MRI: Indications and reporting
P. Baltzer, Vienna/AT

09:20 Discussion
P. Baltzer, Vienna/AT
B. Brkljacic, Zagreb/HR
T. Helbich, Vienna/AT

09:30 30-minute coffee break

WOMEN'S IMAGING – BREAST

B. Brkljacic, Zagreb/HR; K. Feigin, New York/US

10:00 Quality assurance and quality control in breast imaging
K. Feigin, New York/US

10:20 Changes and Challenges in the Screening Paradigm
K. Pinker-Domenig, New York/US

10:40 Update on imaging Interventions and minimal invasive
therapy
M. Fuchsjaeger, Graz/AT

11:00 Discussion
K. Feigin, New York/US
M. Fuchsjaeger, Graz/AT
K. Pinker-Domenig, New York/US

11:20 **Closing remarks**
C. Herold, Vienna/AT
H. Hricak, New York/US
M.F. Reiser, Munich/DE
H-P. Schlemmer, Heidelberg/DE

PARTNERS



OIC.11 IS JOINTLY ORGANISED BY



OIC.11 IS KINDLY SPONSORED BY



ACCREDITATION & DISCLOSURE STATEMENT

UEMS CME accreditation

The OIC 2022 – Oncologic Imaging Course, Dubrovnik, Croatia, 29/06/2022-02/07/2022 has been accredited by the European Accreditation Council for Continuing Medical Education (EACCME®) with 18 European CME credits (ECMEC®s). Each medical specialist should claim only those hours of credit that he/she actually spent in the educational activity.

Through an agreement between the Union Européenne des Médecins Spécialistes and the American Medical Association, physicians may convert EACCME® credits to an equivalent number of AMA PRA Category 1 Credits™. Information on the process to convert EACCME® credit to AMA credit can be found at www.ama-assn.org/education/earn-credit-participation-international-activities.

Live educational activities, occurring outside of Canada, recognised by the UEMS-EACCME® for ECMEC®s are deemed to be Accredited Group Learning Activities (Section 1) as defined by the Maintenance of Certification Program of the Royal College of Physicians and Surgeons of Canada.

Important: Due to UEMS regulations, attendees can only claim CME credits for the sessions that have actually been attended during the event. You will need to evaluate each session that you attended and would like to receive credits for on the event evaluation form. As part of this process participants' attendance will be monitored throughout the event. Deadline for evaluation: Sunday, July 10, 2022. CME certificates will be sent by end of July. UEMS Evaluation Link:



Potential conflict of interest disclosure

It is the policy of ESOI to ensure balance, independence, objectivity, and scientific rigour in the congress programme. Knowledge of possible relationships with sponsors of any kind is mandatory in order to reinforce the educational and scientific message and to relieve any suspicion of bias.

Any potential conflict of interest involving the organising committee will be made known so that the audience may form their own judgements about the presentation with a full disclosure of the facts. It is for the audience to determine whether the presenter's external interest may reflect a possible bias in either the work carried out or the conclusions presented.

The ESOI President, Prof. Heinz-Peter Schlemmer, did not disclose any relationships.

The ESOI Education Committee chairperson, Prof. Giulia Zamboni, did not disclose any relationships.

GENERAL INFORMATION

Course venue

Hotel Excelsior
Frana Supila 12
20000 Dubrovnik, Croatia

Registration desk & opening hours

In case of any questions, kindly consult the registration desk, staff persons will be happy to assist you.

You can collect your name badge and all course material at the registration desk between the following hours:

Wednesday, June 29	14:00 - 18:30
Thursday, June 30	07:30 - 18:30
Friday, July 01	07:30 - 18:00
Saturday, July 02	08:00 - 11:30

Conference language

The meeting will be held in English. No simultaneous translation will be offered.

Registration fee for delegates includes

- admittance to all sessions
- admittance to the industry exhibition
- congress programme and abstract syllabus
- certificate of attendance
- coffee breaks

Badges

You are kindly asked to wear your badge visible on the congress grounds at all time. Otherwise no access can be granted to the lecture room, workshop rooms or coffee breaks.

Internet/WIFI

All participants have complimentary internet/WIFI access. Please login to the network „ALH.net“ and connect.

Mobile phones

Please do not forget to switch off your mobile phones before entering any of the lecture rooms.

Future meeting desk

The future meeting desk offers you an overview of future meetings in the field of radiology and related disciplines, from all over the world. Feel free to contribute flyers and posters to promote your own meetings and courses.

Meeting rooms

Lavandula 1:	Plenary room Thursday, Friday, Saturday
Lavandula 2+3:	Workshop rooms Wednesday, Thursday

Coffee and lunch breaks

Coffee breaks will be held at the Abakus Piano Bar.

Lunch will be served at the Salin restaurant. Please ensure to bring your lunch vouchers.

Welcome reception

All participants are invited to the Welcome reception on Thursday, June 30, at 18:30. The reception takes place at the Palm Terrace, within the Hotel Excelsior.

GENERAL INFORMATION

Syllabus

An electronic syllabus comprising of all submitted presentations will be provided after the course.

Certificate of attendance

Each participant who successfully registered and attended the event will receive a confirmation of attendance after the meeting. The CME credits are only available for those who successfully complete the evaluation.

Photography

Pictures and videos may be taken during the meeting. A photo gallery with all photos will be available to registered participants. In addition, some photographs and videos taken during the meeting may be used for promotional purposes.

Safety

The safety of all congress delegates and participants is of utmost importance to ESOI. Security measures and precautions at the OIC 2022 venue have been tightened to ensure maximum security for all attendees. Badges must be worn visibly on the congress grounds at all time. ESOI reserves the right for staff to check participants' identification upon admission to and/or inside the congress venue. Participants may at any time be requested to present adequate proof of identity in the form of a passport, driver's license, national or military identification or student ID. Documents for the proof of identity must include a photograph and signature.

Disclaimer/Liability

ESOI cannot accept any liability for the acts of the suppliers to this meeting or the attendees' safety while travelling to or from the congress. All participants and accompanying persons are strongly advised to carry adequate travel and health insurance, as ESOI cannot accept liability for accidents or injuries that may occur. ESOI is not liable for personal injury and loss or damage of private property.

Contact

ESOI Office
Am Gestade 1
1010 Vienna, Austria
+ 43 15334064-924
office@esoi-society.org



**Bracco, your partner
in diagnostic imaging**
welcomes you to the 2022 annual
Oncologic Imaging Course!

ESOI Research Webinar

for ESOI Young Radiologists

Thursday, September 29, 2022 | 18:00–19:30 CEST

ESOI is organising its first Research Webinar, for which ESOI Young Radiologists are invited to submit abstracts. Authors of the best 8 abstracts will be invited to present their work during the research webinar. The abstract should be separated in “Purpose/Objectives”, “Methods and materials”, “Result”, “Conclusion”. The body limit is 350 words. The winners of the best 3 presentations will be announced at the end of the session.

Submit your abstract(s) and take the chance to win one of the awards!

Abstract Submission deadline

Monday, August 15, 2022
23:59 CEST

Awards

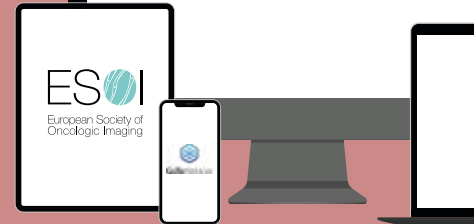
First prize: free registration to the ESOI Annual Meeting 2023

Second prize: free ESOI membership for 2023 and 2024

Third prize: free ESOI membership for 2023

Don't
miss!

Open for active
ESOI Members



Further information & registration: www.esoi-society.org

ESOI-EORTC Workshop 2022

Imaging in assessing response to cancer therapy

October 26–28, 2022 | Bordeaux, France



The ESOI-EORTC workshop is an interactive hands-on course aimed at practising radiologists and radiology residents, focusing on the criteria-based assessment of tumour response to treatment. The course consists of a number of lectures explaining the principles of imaging-based tumour response assessment and several hands-on interactive training workshops using specialised software with common and rare cancer cases encountered in the clinical routine or within clinical trials.



Organisers

M. D'Anastasi, Msida/MT
L. Fournier, Paris/FR

Local Organiser

M. Kind, Bordeaux/FR

Course Venue

Hotel Mercure Bordeaux Centre Ville
5 Rue Robert Lateulade
33000 Bordeaux
France

Partner Society



The future of cancer therapy

Further information & registration: www.esoi-society.org

